



mainroads  
WESTERN AUSTRALIA

*We're working for  
Western Australia.*

Special Purpose Vehicle

# Standard Operating Conditions

Printed copies are uncontrolled unless marked otherwise.  
Refer to Main Roads website for current version.

D15#400816  
September 2021

# Contents

|  |           |
|--|-----------|
| <b>REFERENCES AND RELATED DOCUMENTS .....</b>              | <b>5</b>  |
| <b>DEFINITIONS .....</b>                                   | <b>5</b>  |
| <b>1 APPLICATION .....</b>                                 | <b>8</b>  |
| <b>2 COMPLYING WITH LICENCING CONDITIONS .....</b>         | <b>8</b>  |
| <b>3 COMPULSORY HEAVY VEHICLE INCIDENT REPORTING .....</b> | <b>8</b>  |
| <b>4 PERMIT STATUS.....</b>                                | <b>8</b>  |
| 4.1 Permit Suspension & Revocation.....                    | 8         |
| 4.2 Permit Amendments & Notifications.....                 | 8         |
| <b>5 INTEGRATING PERMITS AND/OR ORDERS .....</b>           | <b>9</b>  |
| <b>6 ROUTE SUITABILITY .....</b>                           | <b>9</b>  |
| 6.1 Approved Roads or Areas.....                           | 9         |
| 6.2 Route Restrictions .....                               | 9         |
| 6.3 Route Survey.....                                      | 9         |
| 6.4 Height Restrictions.....                               | 10        |
| 6.5 Width Clearance Requirements .....                     | 10        |
| 6.6 Contraflow Movements .....                             | 10        |
| 6.7 Regional Contacts .....                                | 10        |
| 6.8 Other Agency Approvals .....                           | 11        |
| <b>7 DIMENSION REQUIREMENTS.....</b>                       | <b>11</b> |
| 7.1 Maximum Dimension Limits .....                         | 11        |
| 7.2 Minimising Dimensions .....                            | 11        |
| 7.3 Rear Overhang & Projection .....                       | 11        |
| <b>8 MASS REQUIREMENTS.....</b>                            | <b>12</b> |
| 8.1 Maximum Mass Limits .....                              | 12        |
| 8.2 Axle Spacings.....                                     | 12        |
| 8.3 Ground Contact Width .....                             | 12        |
| 8.4 Crossing Bridges .....                                 | 12        |
| <b>9 SPEED &amp; SAFE TRAVEL CONDITIONS .....</b>          | <b>12</b> |
| 9.1 Speed Restrictions.....                                | 12        |
| 9.2 Passing & Overtaking .....                             | 13        |
| 9.3 Minimum Following Distance .....                       | 13        |
| 9.4 Poor Visibility .....                                  | 13        |
| <b>10 TOWING &amp; LOADING RESTRICTIONS.....</b>           | <b>13</b> |
| <b>11 WARNING DEVICES.....</b>                             | <b>13</b> |
| 11.1 Lights.....   | 13        |
| 11.2 Warning Signs & Flags .....                           | 14        |
| 11.3 Additional Warning Devices at Night.....              | 14        |
| 11.4 Other Markings .....                                  | 15        |
| <b>12 PILOT &amp; TRAFFIC ESCORT REQUIREMENTS .....</b>    | <b>15</b> |

|  |           |
|--|-----------|
| 12.1 Pilot & Traffic Escort General Requirements .....                     | 15        |
| 12.2 Pilot and Escort Vehicle Warning Lights and Signs .....               | 16        |
| 12.3 Managing Traffic .....  | 16        |
| 12.4 Position of Pilot and Escort Vehicles .....                           | 16        |
| 12.5 Video Recording Requirements .....                                    | 17        |
| 12.6 Number of Pilot & Traffic Escort Vehicles .....                       | 17        |
| 12.7 Additional Pilot Vehicle Requirements .....                           | 17        |
| 12.8 Exceptions to the Pilot & Escort Vehicle Requirements - General ..... | 18        |
| 12.9 Convoy Travel with Pilot & Traffic Escort Vehicles .....              | 18        |
| <b>13 APPROVED TRAVEL TIMES &amp; CURFEWS .....</b>                        | <b>19</b> |
| 13.1 Night Travel Times & Curfews .....                                    | 19        |
| 13.2 Metropolitan Area Travel Times & Curfews .....                        | 20        |
| 13.3 Port Hedland Curfew .....   | 21        |
| 13.4 Christmas & New Year Curfews .....                                    | 22        |
| 13.5 Easter Curfews .....  | 22        |
| 13.6 Long Weekend Curfews .....  | 22        |
| <b>14 APPENDICES .....</b>   | <b>23</b> |
| Appendix 1: Central Zones .....  | 24        |
| Appendix 2: Metropolitan Area Map .....                                    | 26        |
| Appendix 3: Mandurah Curfew Map .....                                      | 27        |
| Appendix 4: Minimum Pilot & Escort Requirements .....                      | 28        |
| Appendix 5: Fremantle Port Precinct .....                                  | 29        |
| Appendix 6: Henderson Industrial Estate .....                              | 30        |



## REFERENCES AND RELATED DOCUMENTS

The following documents relate to these Operating Conditions and are available on the Main Roads website:

| Document Number | Description   |
|-----------------|---|
| D15#453366      | Oversize Vehicle & Pilot Vehicle General Requirements |
| D19#398498      | Oversize Vehicle Pilot Video - Audit Regime           |
| D18#287647      | Contact Details for Other Agency Approvals            |

## DEFINITIONS

The following are definitions for terms used in these Operating Conditions. Refer to the definitions in the *Road Traffic (Administration) Act 2008* and the *Road Traffic (Vehicles) Act 2012* and any subsidiary legislation to these Acts for the meanings of any terms not defined in this section. If a definition in the relevant Acts or the subsidiary legislation conflicts with a definition in this section, the definition in this section prevails for the purpose of these Operating Conditions.

| Term                               | Definition   |
|------------------------------------|--|
| <b>All-Terrain Crane</b>           | A mobile crane fitted with multiple single axles supported by hydraulic or hydro-pneumatic suspension, typically with between three (3) and eight (8) single axles, several of which are steerable axles.  |
| <b>Central Zones</b>               | The area within and including the boundaries of the Perth and Fremantle Central Zones as depicted in <a href="#">Appendix 1</a> .  |
| <b>Curfew</b>                      | A period when the movement of an SPV is prohibited.  |
| <b>Day</b>                         | The period from sunrise to sunset. Sunrise and sunset times can be obtained from the Perth Observatory website at <a href="http://www.perthobservatory.com.au/">www.perthobservatory.com.au/</a> or by contacting the Perth Observatory on 08 9293 8255, or from the Geoscience Australia website at <a href="http://www.ga.gov.au/geodesy/astro/sunrise.jsp">http://www.ga.gov.au/geodesy/astro/sunrise.jsp</a> |
| <b>Fremantle Port Precinct</b>     | The area within and including the boundaries of the Fremantle Port Precinct as depicted in <a href="#">Appendix 5</a> .  |
| <b>Friday Long Weekend</b>         | A weekend extended to three days where the preceding Friday is the granted Public Holiday.   |
| <b>Henderson Industrial Estate</b> | The area within the boundaries of the Henderson Industrial Estate as depicted in <a href="#">Appendix 6</a> .  |
| <b>Licensing Authority</b>         | A Government Authority responsible for the administration of the vehicle licensing provision of the law of the relevant State, Territory or the Commonwealth.  |
| <b>Main Roads Website</b>          | <a href="http://www.mainroads.wa.gov.au">www.mainroads.wa.gov.au</a> – documents referenced within these operating conditions are published on the Special Purpose Vehicle page.   |
| <b>Metropolitan Area</b>           | As depicted in <a href="#">Appendix 2</a> , means the area within: <ol style="list-style-type: none"> <li>the northern boundaries of the Local Government districts of Wanneroo, Swan and Mundaring;</li> </ol>  |

| Term                             | Definition   |
|----------------------------------|--|
|                                  | <p>(b) the eastern boundaries of the Local Government districts of Wanneroo, Swan, Mundaring, Kalamunda, Armadale and Serpentine-Jarrahdale;</p> <p>(c) the southern boundaries of the Local Government districts of Serpentine-Jarrahdale and Rockingham; and</p> <p>(d) the Indian Ocean coastline.</p>  |
| <b>Monday Long Weekend</b>       | A weekend extended to three days where the following Monday is the granted Public Holiday.   |
| <b>Night</b>                     | The period from sunset to sunrise. Sunset and sunrise times can be obtained from the Perth Observatory website at <a href="http://www.perthobservatory.com.au/">www.perthobservatory.com.au/</a> or by contacting the Perth Observatory on 08 9293 8255, or from the Geoscience Australia website at <a href="http://www.ga.gov.au/geodesy/astro/sunrise.jsp">http://www.ga.gov.au/geodesy/astro/sunrise.jsp</a> |
| <b>Operator</b>                  | A representative of the company responsible for the operation of the RAV.  |
| <b>Order</b>                     | The Order that is published in the Gazette subject to these Operating Conditions, under the provisions of Part 4 of the <i>Road Traffic (Vehicles) Act 2012</i> , which these Operating Conditions form part of.   |
| <b>Peak Hours</b>                | 7.30 am to 9.00 am and 4.30 pm to 6.00 pm on a Monday, Tuesday, Wednesday, Thursday or Friday, other than a public holiday;  |
| <b>Permit</b>                    | A permit issued under Part 4 of the <i>Road Traffic (Vehicles) Act 2012</i> , which these Operating Conditions form part of.   |
| <b>Permit Holder</b>             | The Operator to whom the permit is issued.   |
| <b>Posted Speed Limit</b>        | The speed limit indicated by the numerals on the speed limit sign or 50 kilometres per hour in the absence of a speed limit sign in a built-up area.   |
| <b>Projection</b>                | The distance an object extends beyond the normal confines or body of the vehicle to the front, side or rear.   |
| <b>RAV</b>                       | A Restricted Access Vehicle, including an SPV and Oversize / Overmass (OSOM) vehicle.  |
| <b>Rear Overhang Line</b>        | The centre of a single axle, single axle group, tandem axle group, tri axle group or quad axle group nearest to the rear of the vehicle.   |
| <b>Rear Overhang</b>             | Of a vehicle, means the distance between the rear overhang line and the rearmost part of the vehicle or the load.  |
| <b>Retro-reflective Material</b> | A material that conforms with Class 1 or Class 2 specifications in the <i>Australian Standard AS/NZS 1906.1:2007 – Retro-reflective Materials and Devices for Road Traffic Control Purposes</i> .  |
| <b>Single Trip Permit</b>        | A permit that is issued to an oversize and/or overmass vehicle for a single movement on a specified route.   |
| <b>SPV</b>                       | A Special Purpose Vehicle to which the “ <i>Special Purpose Vehicle Standard Operating Conditions</i> ” apply.   |
| <b>Statutory Mass Limits</b>     | The mass limits prescribed in Part 8 of the <i>Road Traffic (Vehicles) Regulations 2014</i> .  |
| <b>Steer Projection</b>          | The distance measured from the centre of the steering wheel to the most forward extremity of the vehicle.  |

| Term                           | Definition  |
|--------------------------------|---|
| <b>Tandem Drive Network 2</b>  | The <i>Tandem Drive Network 2</i> approved roads are published in the form of Road Tables or are available on the RAV Mapping Tool on the Main Roads website. |
| <b>Tandem Drive Network 5</b>  | The <i>Tandem Drive Network 5</i> approved roads are published in the form of Road Tables or are available on the RAV Mapping Tool on the Main Roads website. |
| <b>Tandem Drive Network 9</b>  | The <i>Tandem Drive Network 9</i> approved roads are published in the form of Road Tables or are available on the RAV Mapping Tool on the Main Roads website. |
| <b>Traffic Guidance Scheme</b> | A traffic guidance scheme approved by Main Roads, available on the Oversize Overmass (OSOM) page on the Main Roads website.                                   |

## 1 APPLICATION

These Operating Conditions apply to a Special Purpose Vehicle (SPV) operating under a permit or order issued by Main Roads and stipulating compliance with these Operating Conditions.

## 2 COMPLYING WITH LICENCING CONDITIONS

Drivers and operators are reminded that in addition to these Operating Conditions, the SPV must be driven in accordance with any conditions of the vehicle's licence, as imposed by the relevant licensing authority.

## 3 COMPULSORY HEAVY VEHICLE INCIDENT REPORTING

All on-road incidents involving an SPV must be reported to Main Roads Heavy Vehicle Services by the operator. The Heavy Vehicle Incident Reporting form is available on the Incident Reporting page on the Main Roads website and it must be submitted within 48 hours of the incident occurring.

## 4 PERMIT STATUS

### 4.1 Permit Suspension & Revocation

- 4.1.1 Approval to operate an SPV may be suspended when road and/or traffic conditions are considered unsuitable. Main Roads personnel, WA Police or Traffic Escort Wardens, may provide verbal notification of such suspension.
- 4.1.2 Approval to operate an SPV may be suspended or revoked if the operator or vehicle combination fails to comply with any of the requirements specified in a permit, order or these Operating Conditions.

### 4.2 Permit Amendments & Notifications

- 4.2.1 These Operating Conditions are subject to occasional amendments. If amendments are made that impact transport operators, they will be published as an "HVS Update" on the Main Roads website and will take effect on the following Wednesday. Operators and drivers are required to ensure that they are operating vehicles on the public road network in accordance with the current Operating Conditions.
- 4.2.2 The lists of restricted bridges are subject to periodic amendments, which include additional bridges being included in the lists or bridges being removed from the lists. The lists of restricted bridges are updated on the Wednesday following the amendment and are maintained on the Main Road website. Operators and drivers are required to ensure they are operating vehicles on the public road network in accordance with the current and up to date list of restricted bridges.
- 4.2.3 Heavy Vehicle Travel Impacts are published when road conditions may impede the movement of an SPV. Operators and drivers are required to check the Heavy Vehicle Travel Impacts on the Main Roads website immediately prior to operating the SPV on the public road network to ensure that there is no relevant information that will impede their vehicle operating on the WA road network.
- 4.2.4 All conditions stipulated in HVS Updates or Heavy Vehicle Travel Impacts must be adhered to. Where a condition stipulates that contact must be made with a site supervisor or any other person prior to travel, this must be done via email or text message and evidence provided to Main Roads' personnel upon request.



## 5 INTEGRATING PERMITS AND/OR ORDERS

An SPV permit or order cannot be used in conjunction with any other permit or order, except a *Bridge Crossing Permit*.

## 6 ROUTE SUITABILITY

### 6.1 Approved Roads or Areas

An SPV must only be driven on a road or within an area specified on the permit or order.

### 6.2 Route Restrictions

- 6.2.1** An SPV must not be driven on a road or within an area that is prohibited on the permit or order.
- 6.2.2** An SPV must not be driven on a bridge that is restricted on the permit order.
- 6.2.3** The operator must use the most appropriate route, which wherever possible should consist of State roads and Regional Distributor roads. Where a heavy vehicle bypass exists, this must be used, unless there is a physical constraint.
- 6.2.4** An SPV must not travel on the following roads, except in accordance with Clause 13.1 – Night Travel Times & Curfews:
- (a) Mitchell Freeway;
  - (b) Graham Farmer Freeway;
  - (c) Kwinana Freeway, north of Anketell Road; and
  - (d) Tonkin Highway between Great Eastern Highway and Muchea.
- 6.2.5** An SPV must only travel on Indian Ocean Drive if there is no alternative route available to access the origin or destination.
- 6.2.6** An SPV travelling through Southern Cross from the west requiring access to locations to the north of Southern Cross must use Three Boys Rd (between Great Eastern Highway and Southern Cross Bullfinch Rd).
- 6.2.7** An SPV travelling through Southern Cross from the east requiring access to locations to the north of Southern Cross must use Polaris St, Koolyanobbing Rd and Cameron Rd (between Great Eastern Highway and Southern Cross Bullfinch Rd).

**Note 1:** *Drive over structure locations and SPV Restricted Bridge Lists are published on the RAV Mapping Tool, available on the Main Roads website.*

**Note 2:** *Crossing a restricted bridge under a period permit or order is not permitted. However, in some circumstances, the vehicle may be permitted to cross a restricted bridge under a Single Trip Permit. Operators may submit a Bridge Crossing Permit application or seek an alternative route.*

**Note 3:** *It is an offence under the Road Traffic Code 2000 for a vehicle to cross a bridge if it has a mass limit in excess of the posted mass limit for the bridge.*

### 6.3 Route Survey

- 6.3.1** Prior to departure, the operator or driver of the SPV must assess the route of travel to ensure that it is suitable for use and it can be driven along without contravening these Operating Conditions.

- 6.3.2** An SPV must not be driven along a route or within an area if doing so would be likely to cause:
- (a) Damage to property or another vehicle; or
  - (b) Damage to telecommunication, electrical, gas, water or sewage services; or
  - (c) Damage to a road (including a bridge), structure, roadside furniture, rail crossing or tree.

## 6.4 Height Restrictions

Unless otherwise specified on the permit, an SPV must not travel under a structure unless there is a minimum of 300 millimetres clearance between the load and the structure.

**Note:** *Drive under structure locations are published on the RAV Mapping Tool, available on the Main Roads website.*

## 6.5 Width Clearance Requirements

- 6.5.1** An SPV must not exceed the available width between kerbs (WBK), unless the RAV has a minimum of 1.2 metres ground clearance to ensure the load will clear the bridge guardrails.
- 6.5.2** If a minimum 300 millimetre clearance between the RAV and any fixed obstacle, including roadside furniture, traffic signals, guardrails etc. is not available due to the width of the load, a spotter must be utilised to guide the driver of the RAV through the obstacle. The driver of a pilot vehicle may perform the function of a spotter, provided it does not affect their ability to perform their duties as the pilot.

**Note:** *Traffic Guidance Scheme TGS RM0395-18-28 Facilitating Movement of Oversize Vehicle(s) Through Narrow Road Section is available on the Main Roads website to provide guidance when managing traffic at a narrow section of road, such as a bridge, guardrail or similar.*

## 6.6 Contraflow Movements

- 6.6.1** Contraflow movements must only be conducted in accordance with an approved Traffic Guidance Scheme. If an approved Traffic Guidance Scheme is not available on the Oversize Overmass (OSOM) page on the Main Roads website, the operator must submit a Traffic Guidance Scheme to Main Roads Heavy Vehicle Services for approval.
- 6.6.2** An SPV undertaking a contraflow movement within the Metropolitan Area must contact the Main Roads Network Operations Centre on 138 111 and advise them of the location, date and time of the contraflow movement.
- 6.6.3** An SPV undertaking a contraflow movement within the Perth Central Zone must contact:
- (a) the City of Perth by emailing [obstruction.permit@cityofperth.wa.gov.au](mailto:obstruction.permit@cityofperth.wa.gov.au) or phoning (08) 9461 3411 to obtain written approval prior to travel; and
  - (b) Main Roads Network Operations Centre on 138 111 and advise them of the location, date and time of the contraflow movement.
- 6.6.4** This clause does not apply to a RAV required to travel on the wrong side of a road when travelling under a power line, as per the direction of the relevant overhead cable operator.

## 6.7 Regional Contacts

The operator or driver of an SPV exceeding 5.5 metres in width and/or 40 metres in length is required to contact the relevant Main Roads Region prior to departure, when travelling on roads within the following regions:

| Region                             | Contact   | Contact Number |
|------------------------------------|---|----------------|
| Any road in the Wheatbelt Region   | Main Roads Wheatbelt Regional Office                              | (08) 9622 4777 |
| Any road in the Mid-West Region    | Main Roads Mid-West Regional Office                               | (08) 9956 1200 |
| Any road in the Gascoyne Region    | Main Roads Gascoyne Regional Office                               | (08) 9941 0777 |
| Travelling through Broome or Derby | Main Roads Customer Service Manager,<br>Kimberley Regional Office | 0419 988 334   |

## 6.8 Other Agency Approvals

- 6.8.1** An SPV exceeding 4.3 metres in height must not be driven on a road without current written approval from all of the relevant overhead cable operators.
- 6.8.2** Despite sub-clause 6.8.1, an SPV up to 4.6 metres in height may travel on any road listed in *Tandem Drive Network 2*, without approval from the relevant cable operator, except where a height restriction is specified as a road condition in *Tandem Drive Network 2*.
- 6.8.3** Written approval from the relevant rail access provider must be obtained where the SPV will take more than 10 seconds to travel over and fully clear any rail crossing.
- 6.8.4** An SPV exceeding 3.5 metres in width must not be driven on Horrie Miller Drive, north of Paltridge Road, without written approval from the Perth Airport Pty Ltd.
- 6.8.5** If an SPV is crossing the Ord River Diversion Dam on Victoria Highway, Kununurra, in excess of 3.5 metres in width, Water Corporation approval is required. Drivers must initially contact the Water Corporation Dam's Controller at least 1 hour prior to crossing.
- 6.8.6** Written approvals must be carried in the SPV and produced upon request.

**Note:** "Contact Details for Other Agency Approvals" are available on the Oversize Overmass (OSOM) page on the Main Roads website.

## 7 DIMENSION REQUIREMENTS

### 7.1 Maximum Dimension Limits

An SPV must not exceed a dimension limit specified on the permit or order.

### 7.2 Minimising Dimensions

An SPV must be reduced to the smallest possible dimension, i.e. boom or other equipment fully retracted.

**Note:** For the purpose of this clause, any flags, lights or mirrors on the SPV shall be disregarded when measuring the dimensions.

### 7.3 Rear Overhang & Projection

Unless otherwise specified on the permit or order, the rear overhang of an SPV consisting of a prime mover towing a plant trailer, in excess of 19 metres in overall vehicle combination length, must not exceed the lesser of:

- (a) 25% of the overall length of the RAV; or
- (b) 7.5 metres.

## 8 MASS REQUIREMENTS

### 8.1 Maximum Mass Limits

An SPV must not exceed a mass limit specified on the permit or order.

### 8.2 Axle Spacings

**8.2.1** An SPV must comply with axle spacing requirements, measured between the centres of adjacent axle groups, where specified on the permit or order.

**8.2.2** The centres of adjacent axles in an axle group must be at least 1.2 metres apart.

### 8.3 Ground Contact Width

An SPV must comply with the Ground Contact Width (GCW) where specified on the permit or order.

### 8.4 Crossing Bridges

**8.4.1** An overmass SPV must cross all bridges at a maximum speed of 25 km/h, unless a lower speed for a particular bridge is specified on the permit.

**8.4.2** An overmass SPV must cross all bridges positioned in the centre of the traffic lanes in the direction of travel, unless another position is specified for a particular bridge on the permit.

**8.4.3** Where Bridge Video Supervision (BVS) is specified on the permit, the SPV must be operated in accordance with the *Bridge Video Supervision Audit Requirements*, available on the Oversize Overmass (OSOM) page on the Main Roads website.

## 9 SPEED & SAFE TRAVEL CONDITIONS

### 9.1 Speed Restrictions

**9.1.1** An SPV exceeding 3.5 metres in width travelling during the day must not be driven at a speed that exceeds the lesser of:

- (a) 80 km/h; or
- (b) The posted speed limit.

**9.1.2** An SPV exceeding 2.5 metres in width travelling at night must not be driven at a speed that exceeds the lesser of:

- (a) 80 km/h; or
- (b) The posted speed limit.

**9.1.3** An SPV approaching a railway crossing must be driven at a speed at which the driver can, if necessary, stop safely before the crossing.

**9.1.4** An SPV approaching any fixed obstacle, including roadside furniture, traffic signals, guardrails etc. must be driven at a speed at which the driver can safely negotiate the obstacle and if necessary, stop safely.

**9.1.5** A SPV approaching another vehicle in the opposing direction must be driven at a speed at which the driver can, if necessary, move over or stop safely before passing.

## 9.2 Passing & Overtaking

- 9.2.1** The driver of an SPV, lead pilot or Traffic Escort Warden must monitor the UHF channel 40 for oncoming RAVs. Where it is identified that the SPV and a RAV will need to pass in opposing directions and the road width is not adequate, the SPV or RAV that is passing a suitable parking bay must stop in the parking bay to facilitate the vehicles passing each other. All involved parties must communicate with one another to determine who will stop in a parking bay, or if no parking bay is available, move off the road at a suitable location.
- 9.2.2** Where the road width is not sufficient to allow an oncoming vehicle to pass the SPV and for both vehicles to remain on the sealed section of road, the SPV driver must determine which vehicle is a higher risk. Higher risk includes factors, such as heavier axle loadings and higher centre of gravity. The higher risk vehicle must remain on the sealed section of road, where practicable.

## 9.3 Minimum Following Distance

- 9.3.1** The driver of an SPV must maintain a distance of at least 200 metres from any other RAV travelling in front of it, unless:
- The SPVs are travelling in convoy in accordance with these operating conditions; or
  - The SPV is overtaking the vehicle in front or the vehicle in front is stopping; or
  - There is a separate lane available for the use of overtaking traffic; or
  - The SPV is in an urban area and it is not reasonably practicable to maintain such a distance; or
  - The SPV is stopped, or coming to a stop for the purpose of complying with a provision of any law or avoiding conflict with other traffic.

## 9.4 Poor Visibility

- 9.4.1** The driver of an SPV must not begin to travel if, due to circumstances such as fog, heavy rain, smoke, dust or insect plague:
- The visibility is less than 250 metres during the day; or
  - The headlights of a vehicle approaching within 250 metres cannot be seen at night.
- 9.4.2** Where an SPV is already travelling when visibility is reduced to the level described above, the driver must drive into the nearest safe parking area, and wait until visibility improves beyond that level before continuing to travel.

# 10 TOWING & LOADING RESTRICTIONS

- 10.1.1** An SPV must not tow a trailer or any other vehicle, unless towing a trailer is specifically approved on the permit.
- 10.1.2** An SPV must not carry a load, unless the load is operating equipment that is necessary for the operation of the SPV.

# 11 WARNING DEVICES

## 11.1 Lights

- 11.1.1** An SPV must operate with headlights switched on at all times, unless the SPV is not required to be fitted with headlights.

- 11.1.2 An SPV combination exceeding 3.0 metres in width and/or 25 metres in length must display at least one amber flashing warning light.
- 11.1.3 An SPV that is a motor vehicle exceeding 3.0 metres in width and/or 14.5 metres in length must display at least one amber flashing warning light.
- 11.1.4 A mobile crane exceeding 2.7 metres in width may display an amber flashing warning light.
- 11.1.5 A warning light must comply with the requirements set out in the *Oversize Vehicle & Pilot Vehicle General Requirements*.
- 11.1.6 An SPV must not display an amber flashing warning light if not required under this clause.

## 11.2 Warning Signs & Flags

- 11.2.1 An SPV combination exceeding 2.5 metres in width and/or 25 metres in length must clearly display:
  - (a) An “Oversize” warning sign on the front of the vehicle; and
  - (b) An “Oversize” warning sign on the rear of the vehicle; and
  - (c) Four (4) warning flags. One flag must be positioned at each side of both the front and rear of the vehicle.
- 11.2.2 An SPV combination with a length exceeding 22 metres, up to 25 metres, and with a width not exceeding 2.5 metres, must only display an “Oversize” warning sign on the rear of the vehicle.
- 11.2.3 An SPV that is a motor vehicle exceeding 2.5 metres in width and/or 14.5 metres in length must clearly display:
  - (a) An “Oversize” warning sign on the front of the vehicle; and
  - (b) An “Oversize” warning sign on the rear of the vehicle; and
  - (c) Four (4) warning flags. One flag must be positioned at each side of both the front and rear of the vehicle.
- 11.2.4 A mobile crane must have a warning flag, attached to the front of the boom or jib at all times.
- 11.2.5 An “Oversize” warning sign and flag must comply with the requirements set out in the *Oversize Vehicle & Pilot Vehicle General Requirements*.
- 11.2.6 An SPV must not display an “Oversize” warning sign if not required under this clause.

## 11.3 Additional Warning Devices at Night

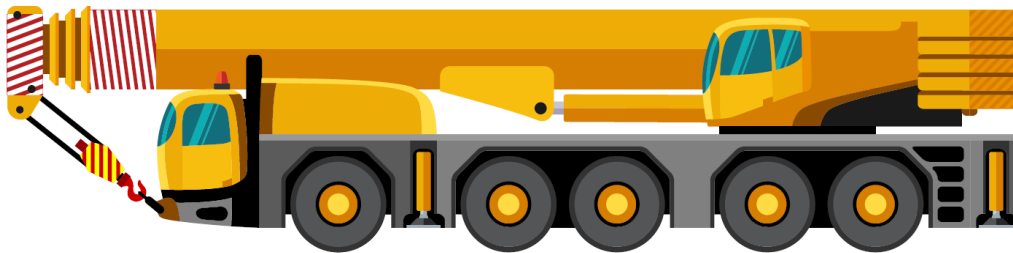
- 11.3.1 If travelling at night, an SPV combination in excess of 2.5 metres in width and/or 25 metres in length must display at least one amber flashing warning light.
- 11.3.2 If travelling at night, an SPV motor vehicle in excess of 2.5 metres in width and/or 14.5 metres in length must display at least one amber flashing warning light.
- 11.3.3 An SPV travelling at night must also display:
  - (a) Lights showing yellow to the front and red to the rear (known as “side markers”), no more than 2 metres apart along both sides of the vehicle or load;
  - (b) 2 red lights (known as “rear clearance lights”) fitted to the rear most part of the vehicle, within 400 millimetres of each side of the vehicle and at least 1 metre, but not more than 2.1 metres, above the ground; and

- (c) On a projection that is extending more than 1.2 metres in front of the vehicle's body:
  - (i) Yellow lights fitted as far forward as possible, visible to traffic approaching from the front and both sides and shielded from the driver's view; and
  - (ii) Side marker lights along both sides of the front projection, no more than 1.5 metres apart.

**11.3.4** A warning light must comply with the requirements outlined in the *Oversize Vehicle & Pilot Vehicle General Requirements*.

## 11.4 Other Markings

If an SPV has a forward projection exceeding 1.2 metres, the part that is projecting forward of the vehicle's body must display striping made from *retro-reflective* material, coloured red and white or red and yellow, as shown in the following example.



## 12 PILOT & TRAFFIC ESCORT REQUIREMENTS

### 12.1 Pilot & Traffic Escort General Requirements

- 12.1.1** The pilot vehicle and SPV must comply with the requirements stipulated in the *Oversize Vehicle & Pilot Vehicle General Requirements*.
- 12.1.2** The driver of a pilot vehicle that accompanies an SPV must hold a Heavy Vehicle Pilot Licence.
- 12.1.3** An escort vehicle that accompanies an SPV must only be driven by a Traffic Escort Warden.
- 12.1.4** Where a Traffic Escort Warden is accompanying an SPV, the Traffic Escort Warden is in control of the movement. The driver of an SPV and the pilot must comply with any lawful direction or signal given by the Traffic Escort Warden.
- 12.1.5** The driver of an SPV must comply with any lawful direction or signal given by the lead pilot.
- 12.1.6** The driver of an SPV must produce the permit to the pilots and Traffic Escort Warden upon request.
- 12.1.7** Prior to accompanying an SPV, the pilot and Traffic Escort Warden must inform themselves of the SPV dimensions, approved route, operating conditions and any applicable OSOM-TMP or Traffic Guidance Scheme. The pilot and Traffic Escort Warden must not accompany an SPV that exceeds the allowable dimensions or does not comply with the operating conditions.
- 12.1.8** The headlights or day running lights on a pilot vehicle or escort vehicle must be switched on when accompanying an SPV.

**12.1.9** A pilot vehicle or escort vehicle must not tow a trailer or carry a load, but it may carry tools, equipment or substances for use in connection with the SPV it is accompanying.

**Note:** *If an SPV is required to be accompanied by a pilot vehicle, the driver of the pilot vehicle must ensure that they comply with each provision of the permit that applies to the pilot vehicle.*

## 12.2 Pilot and Escort Vehicle Warning Lights and Signs

**12.2.1** When accompanying an SPV, pilot vehicles must have amber flashing warning lights operating in accordance with the *Oversize Vehicle & Pilot Vehicle General Requirements*.

**12.2.2** When accompanying an SPV exceeding 4.5 metres in width, the lead pilot vehicle must have two “alternating flashing white lights”, known as *Wig Wag Lights*, on the front of the pilot vehicle in accordance with the *Oversize Vehicle & Pilot Vehicle General Requirements*.

**12.2.3** When accompanying an SPV, pilot vehicles must have “Oversize Load Ahead” warning signs displayed in accordance with the *Oversize Vehicle & Pilot Vehicle General Requirements*.

**12.2.4** When accompanying an SPV, an escort vehicle must have red and blue flashing warning lights operating.

**12.2.5** Pilot vehicles and escort vehicles must not have warning lights operating or signs displayed when not accompanying an SPV.

## 12.3 Managing Traffic

**12.3.1** The pilot and Traffic Escort Warden must use UHF Channel 40 at regular intervals to warn oncoming traffic of the approaching SPV.

**12.3.2** In accordance with clause 9.2, a pilot and Traffic Escort Warden must monitor the UHF channel 40 for oncoming RAVs or oncoming higher risk vehicles and must facilitate the SPV or the other vehicles pulling into parking bays, or other appropriate areas, to enable the oncoming vehicles to pass safely.

**12.3.3** To ensure the oncoming traffic can pass the SPV safely, the lead pilot(s) and/or Traffic Escort Warden must give clear lawful directions to oncoming traffic to move off the road. If a vehicle is not a sufficient distance off the road to allow clear passage of the SPV, the pilot or Traffic Escort Warden must advise the driver of the SPV and the SPV must stop until the passage is clear.

## 12.4 Position of Pilot and Escort Vehicles

**12.4.1** When one (1) pilot vehicle accompanies an SPV, the pilot vehicle must travel:

- (a) Behind the SPV when travelling on a road with multiple lanes in the direction of travel (other than overtaking lanes); or
- (b) In front of the SPV when travelling on a road with a single lane in the direction of travel.

**12.4.2** When two (2) pilot vehicles accompany an SPV, the pilot vehicles must travel:

- (a) One (1) in front of the SPV and one (1) behind the SPV; or
- (b) Where necessary to manage traffic behind the SPV, both may travel behind the SPV when travelling on a road with multiple lanes in the direction of travel (other than overtaking lanes), provided the SPV does not encroach into oncoming traffic.



- 12.4.3** Sub-clauses 12.4.1 and 12.4.2 do not apply when it is necessary for the pilot vehicles to be positioned in a different manner for the purpose of managing traffic at intersections, bridge crossings or in accordance with a Traffic Guidance Scheme.
- 12.4.4** A pilot vehicle and escort vehicle must travel far enough ahead of the SPV it is accompanying to give adequate warning to other road users of the presence of the SPV, taking into account the type of vehicles that use the road, traffic speed, road geometry, availability of safe pullover areas, weather, visibility and other driving conditions.
- 12.4.5** A pilot vehicle and escort vehicle must not travel on or over continuous dividing lines on a carriageway, unless positioning the vehicle in a safe manner to control an intersection or close a road / bridge.
- 12.4.6** When crossing continuous dividing lines on a carriageway to control an intersection or close a road / bridge, the pilot or Traffic Escort Warden must ensure there is sufficient sight distance available for approaching traffic to see the pilot or escort vehicle and stop safely.

## 12.5 Video Recording Requirements

- 12.5.1** A Licensed Heavy Vehicle Pilot's vehicle, accompanying an SPV in excess of 4.5 metres in width, must be fitted with forward facing video recording devices that records the movement in accordance with the *Oversize Vehicle Pilot Video – Audit Regime*.
- 12.5.2** The Licensed Heavy Vehicle Pilot and the operator of the SPV must comply with the requirements stipulated in the *Oversize Vehicle Pilot Video – Audit Regime*.

## 12.6 Number of Pilot & Traffic Escort Vehicles

- 12.6.1** An SPV must be accompanied by the minimum number of pilot vehicles and traffic escort vehicles specified in [Appendix 4](#) – Minimum Pilot & Escort Requirements; except where:
- (a) Pilot and Escort requirements are specified in the permit; or
  - (b) Clause 12.7 – Additional Pilot Vehicle Requirements applies; or
  - (c) Clause 12.8 – Exceptions to Pilot & Escort Vehicle Requirements apply; or
  - (d) Additional pilot requirements are specified under Clause 12.9 for convoy travel.

## 12.7 Additional Pilot Vehicle Requirements

- 12.7.1** The number of pilot vehicles specified in clauses 12.6 to 12.9 are the minimum number of pilot vehicles required. If an operator considers it necessary to use additional pilot vehicles to facilitate the safe movement of the SPV, additional pilot vehicles may be used.
- 12.7.2** Where an SPV is operating in accordance with a Main Roads approved Traffic Guidance Scheme or OSOM-TMP, the additional number of pilots identified in the approved scheme or plan must be used.
- 12.7.3** When travelling at night, an SPV with a steer projection exceeding 5.5 metres must be accompanied by a minimum of one (1) pilot vehicle.
- 12.7.4** An SPV consisting of an over-length or extendable semi-trailer, with a low profile less than 500 millimetres high, must be accompanied by a minimum of two (2) pilot vehicles if:
- (a) The trailer exceeds 9.5 metres in length, measured from the point of articulation (king pin) to the centre of the rear axle group; and
  - (b) The overall combination length exceeds 25 metres.

- 12.7.5** A RAV conducting central movement over bridges on Great Eastern Highway, between Roe Highway (Midvale) and Yilgarn Ave (Northam), must be accompanied by a minimum of three (3) pilot vehicles, in addition to any Traffic Escort Warden requirement, if applicable.
- 12.7.6** An SPV in excess of 5.5 metres in width and/or 40 metres in length must be accompanied by a minimum of three (3) pilot vehicles, plus one (1) traffic escort vehicle, when travelling on any of the following section of roads:
- (a) Albany Highway between Bedforddale Road Train Assembly Area and Boddington (including Bannister - Marradong Road to Crossman Road); or
  - (b) Australind Roelands Link (Raymond Road) between Australind Bypass and South Western Highway; or
  - (c) Brand Highway between Muchea and Dongara; or
  - (d) Coalfields Highway (Collie Lake King Road) between South Western Highway and Albany Highway; or
  - (e) Great Eastern Highway, between Roe Highway (Midvale) and Yilgarn Ave (Northam); or
  - (f) Great Northern Highway between Apple Street Road Train Assembly Area and Dalwallinu; or
  - (g) All roads within the Metropolitan Area, if travelling in convoy.
- 12.7.7** An SPV using the crossover between Military Road and Roe Highway, Hazelmere, must undertake the movement in accordance with Traffic Guidance Schemes RM0395-18-08 and RM0395-18-12, available on the Oversize Overmass (OSOM) page on the Main Roads website. The bollard key is to be obtained from Main Roads Heavy Vehicle Services.
- 12.7.8** An SPV exiting Campersic Road onto Toodyay Road must have one (1) additional pilot to manage southbound traffic on Toodyay Road.
- 12.7.9** An SPV using the crossover between Chisholm Crescent and Roe Hwy, Kewdale, must undertake the movement in accordance with Traffic Guidance Scheme RM0395-18-23, available on the Oversize Overmass (OSOM) page on the Main Roads website. The bollard key is to be obtained from Main Roads Heavy Vehicle Services.

## 12.8 Exceptions to the Pilot & Escort Vehicle Requirements - General

- 12.8.1** Except where Clause 12.7 applies, an SPV exceeding 25 metres in length, but not exceeding 26 metres in length, may travel on a road specified in *Tandem Drive Network 5* without a pilot vehicle, provided the SPV is not in excess of 2.5 metres in width.
- 12.8.2** Except where Clause 12.7 applies, an SPV exceeding 25 metres in length, but not exceeding 30 metres in length, may travel on a road specified in the *Tandem Drive Network 9* without a pilot vehicle, provided the SPV is not in excess of 2.7 metres in width.

## 12.9 Convoy Travel with Pilot & Traffic Escort Vehicles

- 12.9.1** A maximum of two (2) SPVs may travel in convoy with one another when accompanied by the appropriate number of pilot or escort vehicles, except where:
- (a) The permit restricts convoy travel; or
  - (b) Additional SPVs are approved to travel in convoy on the permit; or
  - (c) Sub-clauses 12.9.2 to 12.9.5 apply.

**12.9.2** Three (3) RAVs may travel in convoy while travelling on the following roads:

- (a) Great Northern Highway north of Wubin;
- (b) Port Hedland Road, Port Hedland;
- (c) Bell Street, Port Hedland.

**12.9.3** Four (4) RAVs may travel in convoy while travelling on the following roads, provided an additional pilot vehicle accompanies the convoy:

- (a) Great Northern Highway north of Newman;
- (b) Port Hedland Road, Port Hedland;
- (c) Bell Street, Port Hedland.

**12.9.4** An SPV must not travel in convoy when required to be accompanied by a pilot or escort vehicle when travelling within a Central Zone.

**12.9.5** SPVs must not travel in convoy on Horrie Miller Drive, north of Paltridge Road in Perth Airport.

**12.9.6** The length of a convoy travelling outside of the Metropolitan Area must not exceed a static length of 200 metres, excluding the pilot and escort vehicles, unless otherwise specified on the permit.

**12.9.7** An SPV exceeding 50 metres in length must not travel in convoy within the Metropolitan Area, unless otherwise specified on the permit.

**12.9.8** Each SPV in the convoy must obtain a separate permit.

**12.9.9** When SPVs are travelling in convoy, the pilot vehicle requirements and any other conditions that are applicable to the largest combination, apply to the convoy.

**12.9.10** The distance between SPVs travelling in convoy must not exceed 100 metres.

**12.9.11** Despite sub-clause 12.9.10, an SPV that is travelling over a bridge must always maintain a distance of at least 200 metres from any other RAV travelling in front of it.

## 13 APPROVED TRAVEL TIMES & CURFEWS

### 13.1 Night Travel Times & Curfews

An SPV must not travel at night except where:

- (a) Specified on the permit; or
- (b) The SPV is of a type described and travelling on the roads specified in the following table:

| SPV Type          | Overall Length | Overall Width | Permitted Roads                                     |
|-------------------|----------------|---------------|---|
| SPV Combination   | ≤30 metres     | ≤3.1 metres   | Any road, subject to Clause 6.2 route restrictions. |
| SPV Motor Vehicle | ≤22 metres     | ≤3.2 metres   | Any road, subject to Clause 6.2 route restrictions. |

|         |  |   |   |
|---------|--|---|---|
| Any SPV | Any Length within the Permit or Order Limits | Any Width within the Permit or Order Limits | Roads within the Fremantle Port Precinct.   |
|         | Any Length within the Permit or Order Limits | Any Width within the Permit or Order Limits | Roads within the Henderson Industrial Estate.   |
| Any SPV | ≤25 metres                                   | ≤3.5 metres                                 | All Roads within the Metropolitan Area, inclusive of the Freeways, between 9:30pm and 5:00am only.  |
|         | Any Length within the Permit or Order Limits | Any Width within the Permit or Order Limits | <ol style="list-style-type: none"> <li>1) All Roads within the Metropolitan Area, excluding the Freeways, between 9:30pm and 5:00am only.</li> <li>2) The sections of Tonkin Highway and Great Northern Highway from the Metropolitan Area boundary to the Muchea RTAA, between 9:30pm and 5:00am.</li> <li>3) Kwinana Freeway south of Anketell Road and Forrest Highway, between 9:30pm and sunrise, provided the RAV is not travelling within the Metropolitan Area after 5:00am. The RAV may only travel off Forrest Highway prior to sunrise to access Kemerton Industrial Estate, Bunbury Port or the Willinge Drive Road Train Assembly Area.</li> </ol> |

### 13.2 Metropolitan Area Travel Times & Curfews

**13.2.1** An SPV must not travel within the Metropolitan Area during peak hours except where:

- (a) Specified on a permit; or
- (b) The SPV is of a type described and travelling on the roads specified in the following table:

| SPV Type   | Overall Length | Overall Width | Permitted Roads                                     |
|--|----------------|---------------|---|
| SPV Combination                                    | ≤22 metres     | ≤2.7 metres   | Any road, subject to Clause 6.2 route restrictions. |
| SPV Motor Vehicle, other than an All-terrain Crane | ≤14.5 metres   | ≤3.1 metres   | Any road, subject to Clause 6.2 route restrictions. |
| All-terrain Crane                                  | ≤22 metres     | ≤3.25 metres  | Any road, subject to Clause 6.2 route restrictions. |

|         |  |   |  |
|---------|--|---|--|
| Any SPV | Any Length within the Permit or Order Limits | Any Width within the Permit or Order Limits | Approved roads within Metropolitan Area during curfew, as depicted in <a href="#">Appendix 2</a> . |
|---------|--|---|--|

**13.2.2** An SPV travelling during peak hours must not exceed the statutory rear overhang limit, as prescribed in the *Road Traffic (Vehicles) Regulations 2014*.

**13.2.3** An SPV exceeding statutory mass limits must not be driven over a bridge in the Metropolitan Area during peak hours if the vehicle is required to be driven over the bridge in the centre of the bridge.

**13.2.4** An SPV must not travel within the Metropolitan Area during the day (outside of peak hours), except where the SPV is travelling on the roads and during the times specified in the following table:

| Overall Length                               | Overall Width                               | Approved Times                                     | Permitted Roads  |
|--|---|--|--|
| Any Length within the Permit or Order Limits | ≤6.5 metres                                 | Any time outside of peak hours.                    | Any road, subject to Clause 6.2 route restrictions.  |
| Any Length within the Permit or Order Limits | Any Width within the Permit or Order Limits | Any time outside of peak hours.                    | Roads within the Fremantle Port Precinct.  |
| Any Length within the Permit or Order Limits | Any Width within the Permit or Order Limits | Any time.  | Roads within the Henderson Industrial Estate.  |
| Any Length within the Permit or Order Limits | >6.5 metres<br>≤8.5 metres                  | Monday to Friday, between 09:30am and 2:00pm only. | Any road, subject to Clause 6.2 route restrictions.  |
|  |   | Saturday and Sunday, between 5:00am and Sunset.    | Any road, subject to Clause 6.2 route restrictions.  |
|  |   | Monday to Friday any time outside peak hours.      | Approved roads within Metropolitan Area during curfew, as depicted in <a href="#">Appendix 2</a> . |

### 13.3 Port Hedland Curfew

**13.3.1** An SPV exceeding 5.5 metres in width and/or 40 metres in length must not travel between 6:00am and 9:00am within the Town of Port Hedland, including Wedgefield, South Hedland, Port Hedland, Cooke Point and Pretty Pool.

**13.3.2** During this curfew period, travel is permitted on Great Northern Highway, south of Powell Road and East of Bell Street, and on Bell St, between Great Northern Highway and the Road Train Assembly Area.

### 13.4 Christmas & New Year Curfews

- 13.4.1** An SPV combination exceeding 3.1 metres in width and/or 30 metres in length must not travel on Forrest Highway and Lakelands Lake Clifton Road (includes Mandurah and Dawesville Bypasses), between the intersections of Pinjarra Road and Peppermint Grove Road, during the period from sunset on 18<sup>th</sup> December until sunrise on 4<sup>th</sup> January. Refer to [Appendix 3 – Mandurah Curfew Map](#).
- 13.4.2** An SPV motor vehicle exceeding 3.25 metres in width and/or 22 metres in length must not travel on Forrest Highway and Lakelands Lake Clifton Road (includes Mandurah and Dawesville Bypasses), between the intersections of Pinjarra Road and Peppermint Grove Road, during the period from sunset on 18<sup>th</sup> December until sunrise on 4<sup>th</sup> January. Refer to [Appendix 3 – Mandurah Curfew Map](#).
- 13.4.3** An SPV exceeding 4.5 metres in width, but not exceeding 5.5 metres in width, and/or exceeding 30 metres in length, but not exceeding 40 metres in length, must not travel on any of the following roads during the periods from sunset on 23<sup>rd</sup> December until sunrise on 27<sup>th</sup> December and from sunset on 30<sup>th</sup> December until sunrise on 4<sup>th</sup> January:
- (a) Albany Highway (Bedfordale Road Train Assembly Area, to Albany)
  - (b) Brand Highway
  - (c) Eyre Highway
  - (d) Great Eastern Highway
  - (e) South Western Highway (Armadale to Bunbury)
  - (f) Great Northern Highway (Roe Highway to Mt Magnet)
- 13.4.4** An SPV exceeding 5.5 metres in width and/or 40 metres in length must not travel on any road in Western Australia during the period from sunset on 18<sup>th</sup> December until sunrise on 4<sup>th</sup> January.

### 13.5 Easter Curfews

- 13.5.1** An SPV combination exceeding 3.1 metres in width and/or 30 metres in length must not travel on Forrest Highway and Lakelands Lake Clifton Road (includes Mandurah and Dawesville Bypasses), between the intersections of Pinjarra Road and Peppermint Grove Road, during the period from sunset on the Wednesday before Good Friday until sunrise on the Tuesday after Easter Monday. Refer to [Appendix 3 – Mandurah Curfew Map](#).
- 13.5.2** An SPV motor vehicle exceeding 3.25 metres in width and/or 22 metres in length must not travel on Forrest Highway and Lakelands Lake Clifton Road (includes Mandurah and Dawesville Bypasses), between the intersections of Pinjarra Road and Peppermint Grove Road, during the period from sunset on the Wednesday before Good Friday until sunrise on the Tuesday after Easter Monday. Refer to [Appendix 3 – Mandurah Curfew Map](#).
- 13.5.3** An SPV exceeding 4.5 metres in width and/or 30 metres in length must not travel on any road in Western Australia during the period from sunset on the Wednesday before Good Friday until sunrise on the Tuesday after Easter Monday.

### 13.6 Long Weekend Curfews

- 13.6.1** An SPV combination exceeding 3.1 metres in width and/or 30 metres in length must not travel on Forrest Highway and Lakelands Lake Clifton Road (includes Mandurah and Dawesville Bypasses), between the intersections of Pinjarra Road and Peppermint Grove Road, (Refer to [Appendix 3 – Mandurah Curfew Map](#)), during the following periods:
- (a) Sunset on the Thursday prior to a Monday long weekend until sunrise on the Tuesday after a Monday long weekend; and

(b) Sunset on the Wednesday prior to a Friday long weekend until sunrise on the Monday after a Friday long weekend.

**13.6.2** An SPV motor vehicle exceeding 3.25 metres in width and/or 22 metres in length must not travel on Forrest Highway and Lakelands Lake Clifton Road (includes Mandurah and Dawesville Bypasses), between the intersections of Pinjarra Road and Peppermint Grove Road, (Refer to [Appendix 3 – Mandurah Curfew Map](#)), during the following periods:

(c) Sunset on the Thursday prior to a Monday long weekend until sunrise on the Tuesday after a Monday long weekend; and

(d) Sunset on the Wednesday prior to a Friday long weekend until sunrise on the Monday after a Friday long weekend.

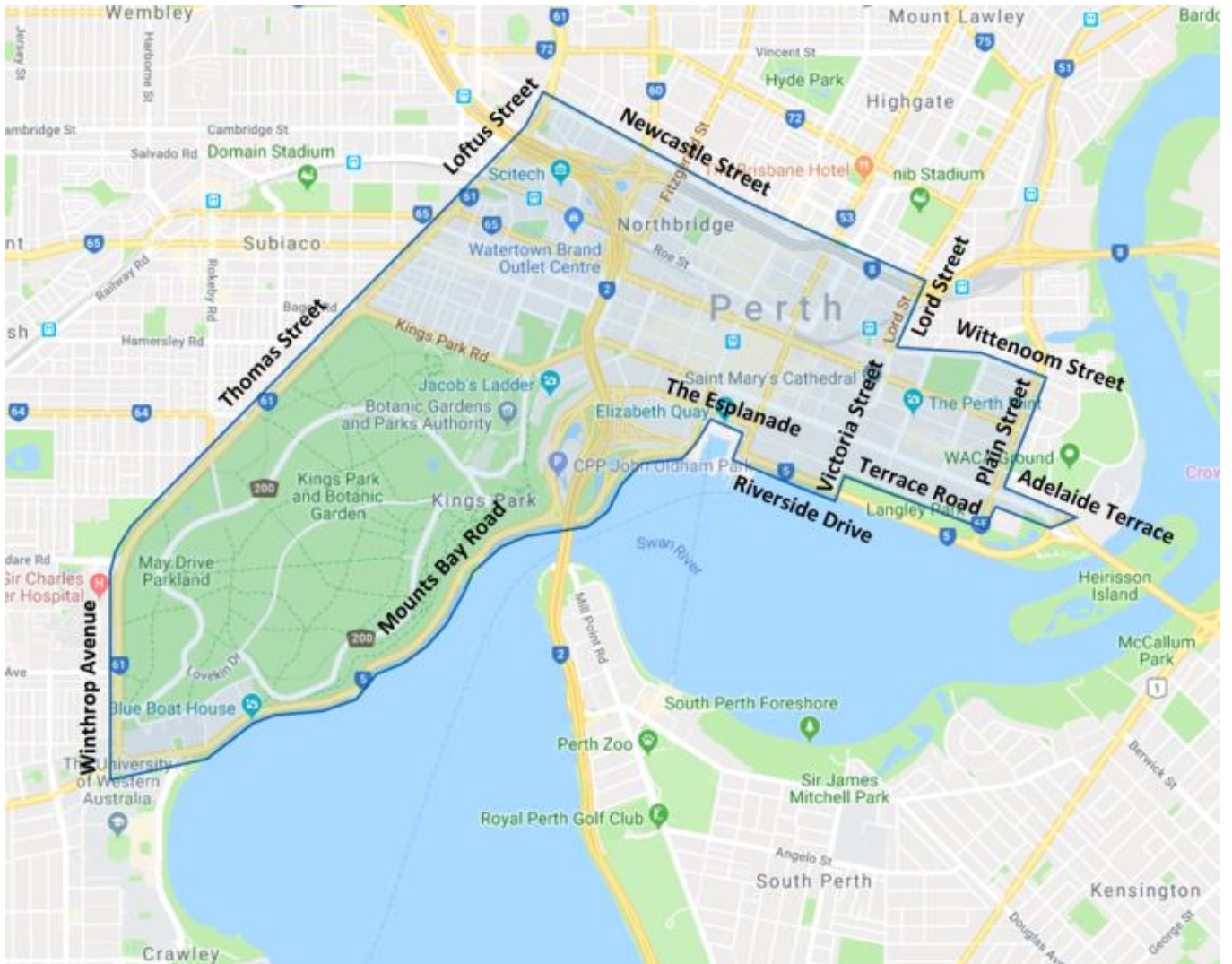
**13.6.3** An SPV exceeding 6.5 metres in width and/or 40 metres in length must not travel within the Metropolitan Area on a Friday prior to a Monday long weekend.

## 14 APPENDICES

| Appendix          | Title                                 |
|-------------------|---------------------------------------|
| <b>Appendix 1</b> | Central Zones                         |
| <b>Appendix 2</b> | Metropolitan Area Curfew Map          |
| <b>Appendix 3</b> | Mandurah Curfew Map                   |
| <b>Appendix 4</b> | Minimum Pilot and Escort Requirements |

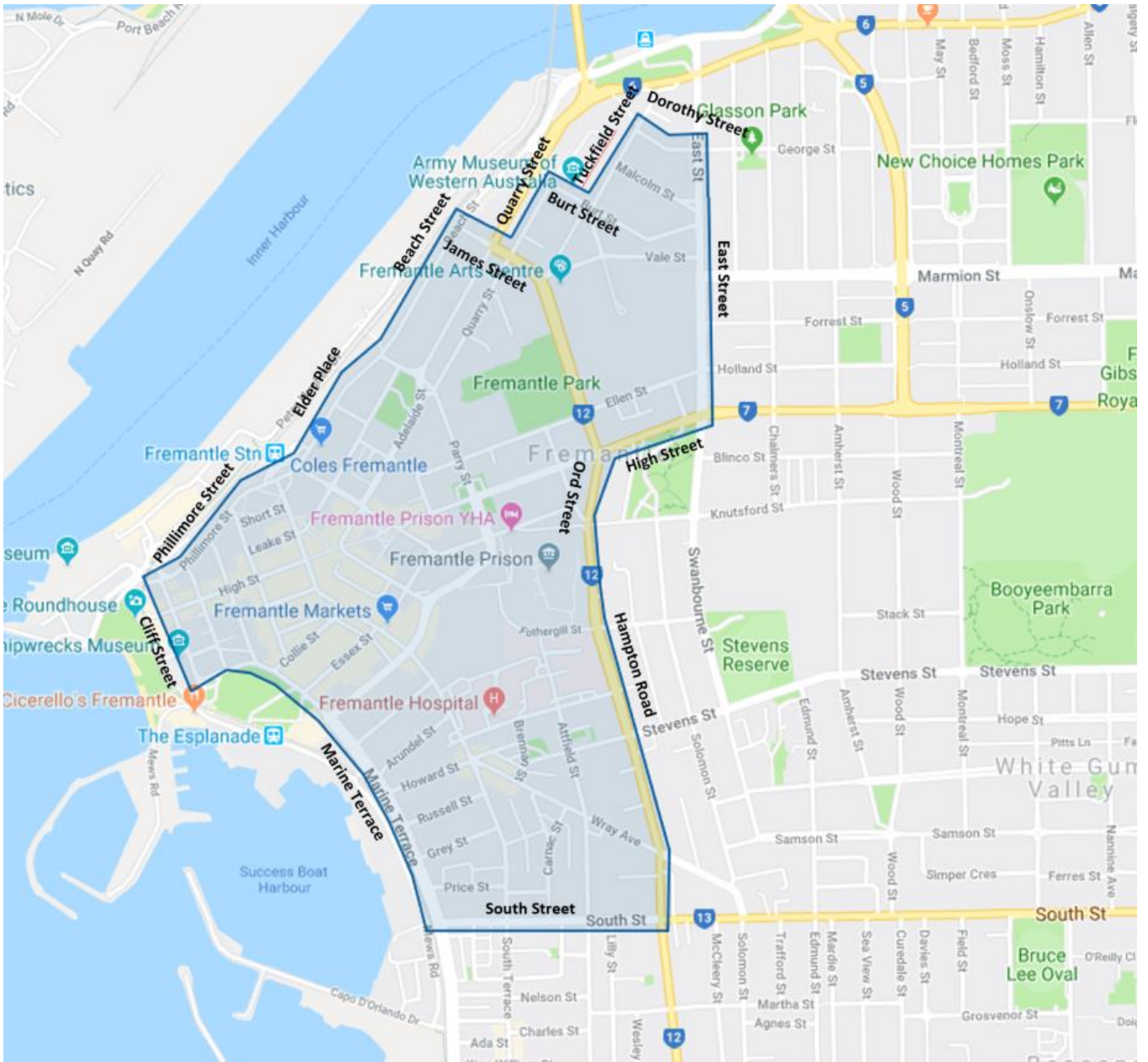
## Appendix 1: Central Zones

Perth Central Zone Map

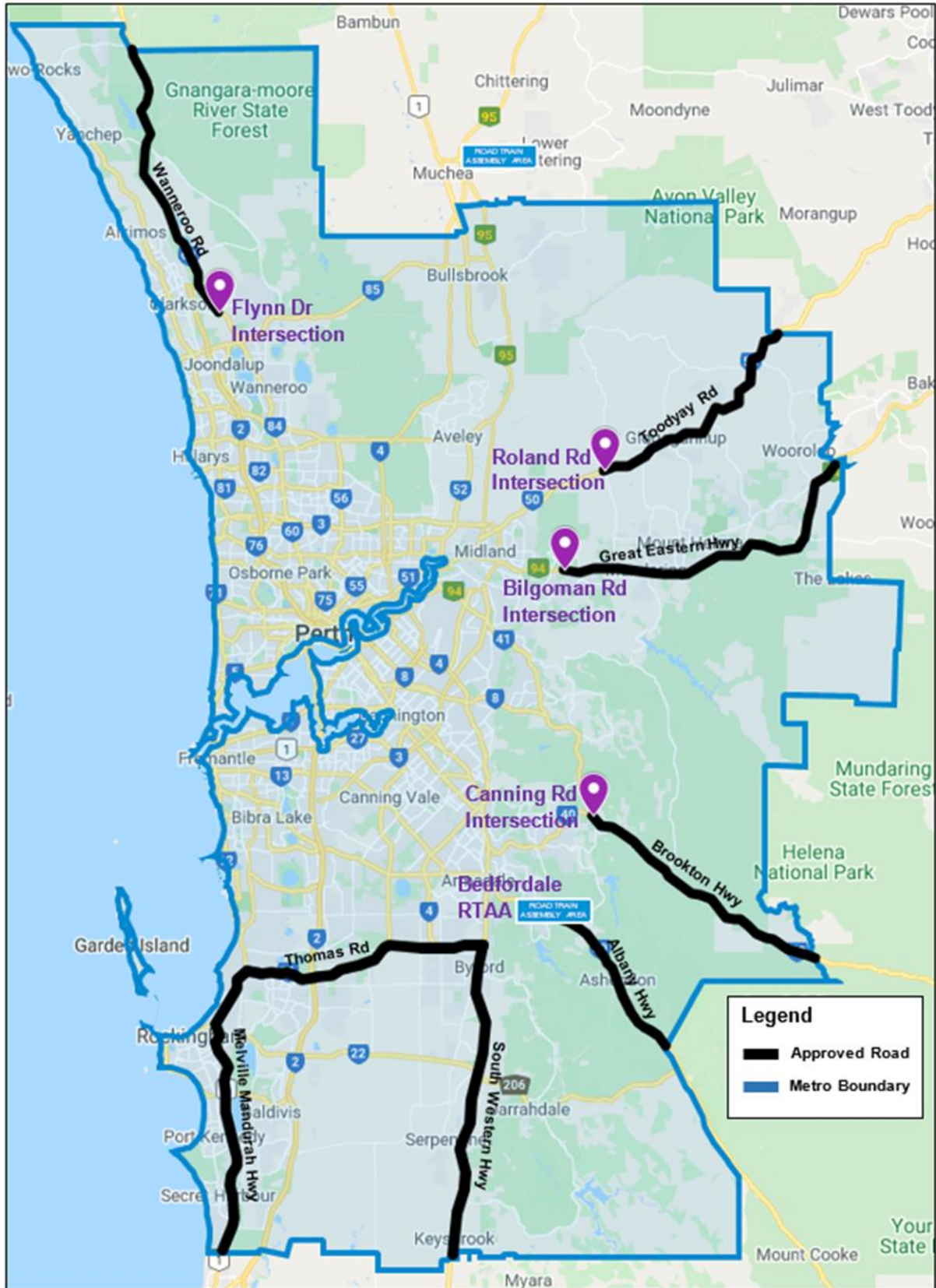




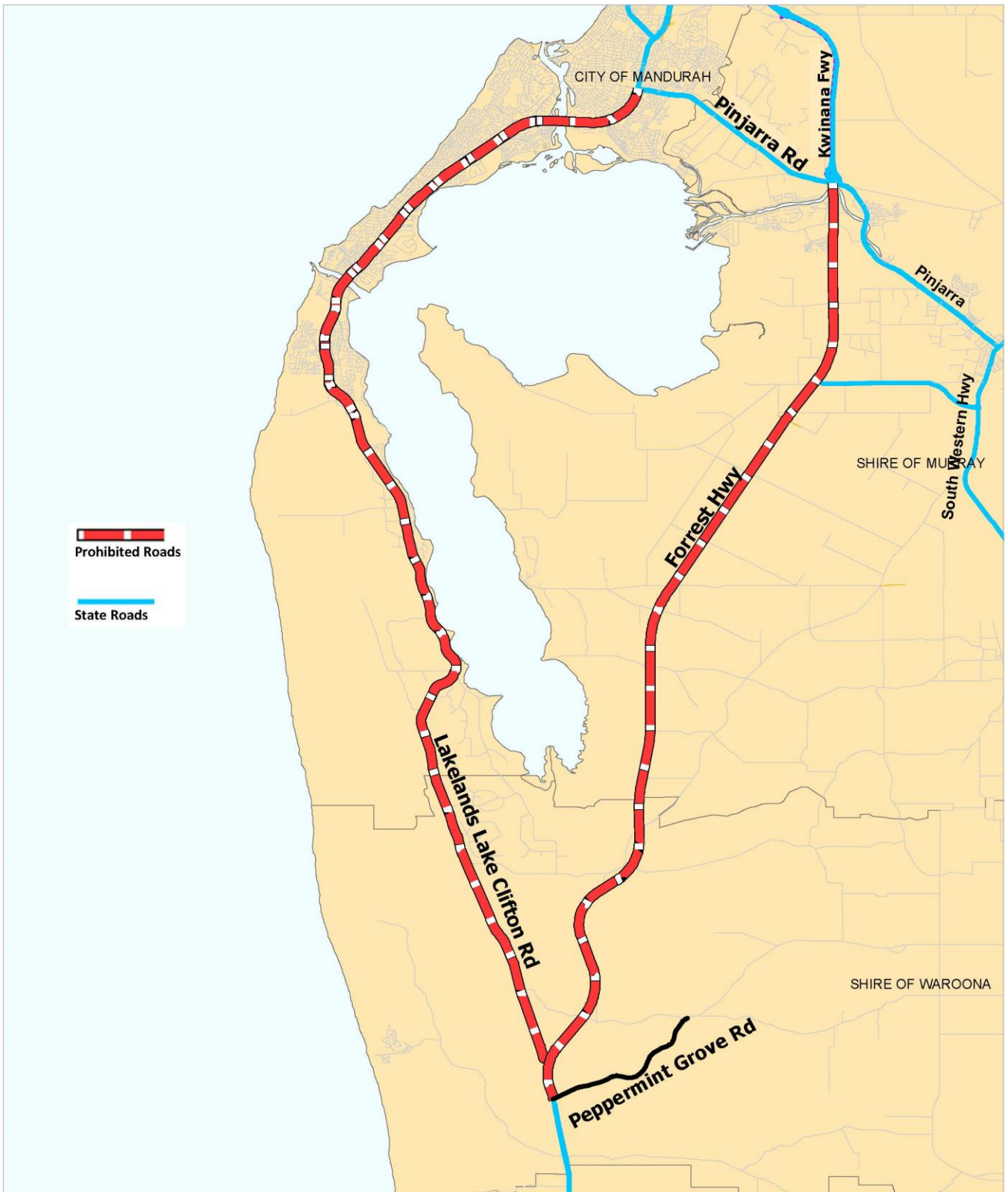
### Fremantle Central Zone Map



## Appendix 2: Metropolitan Area Map

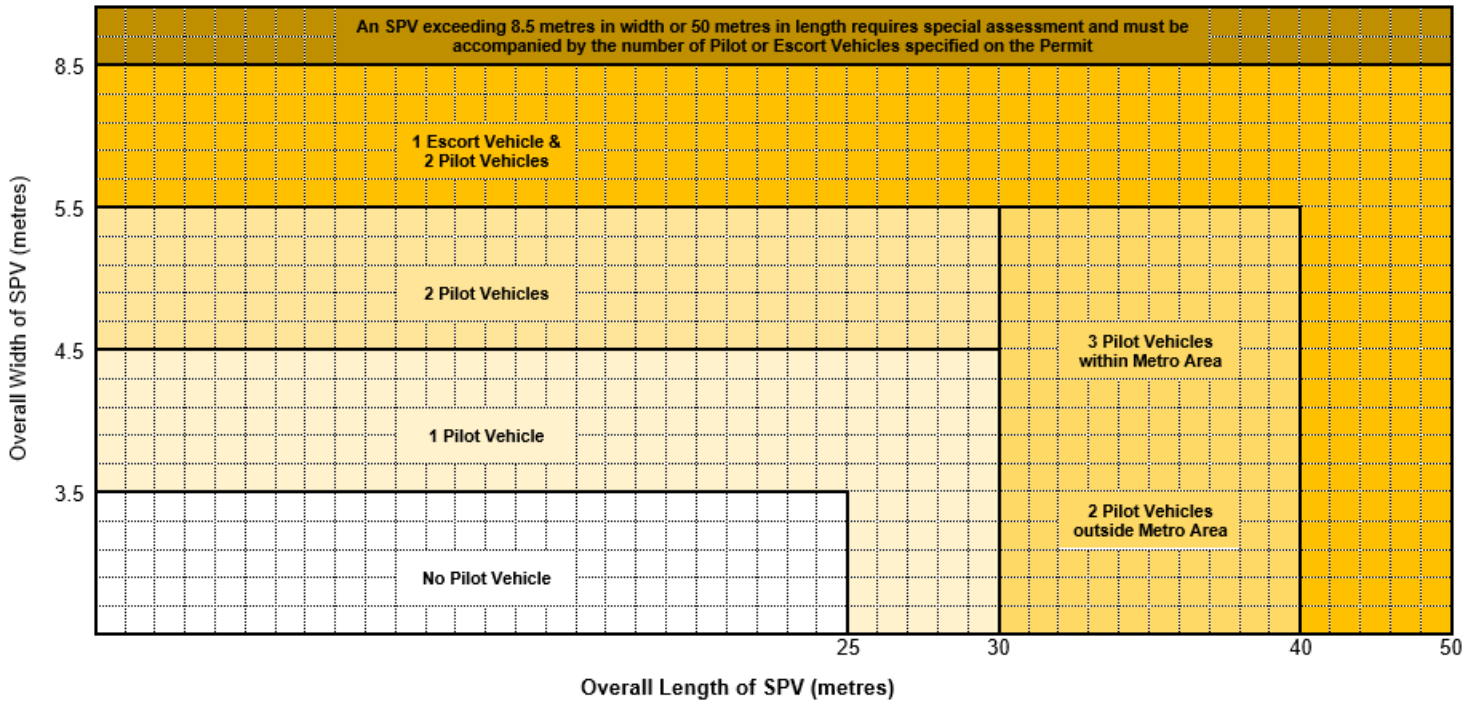


### Appendix 3: Mandurah Curfew Map

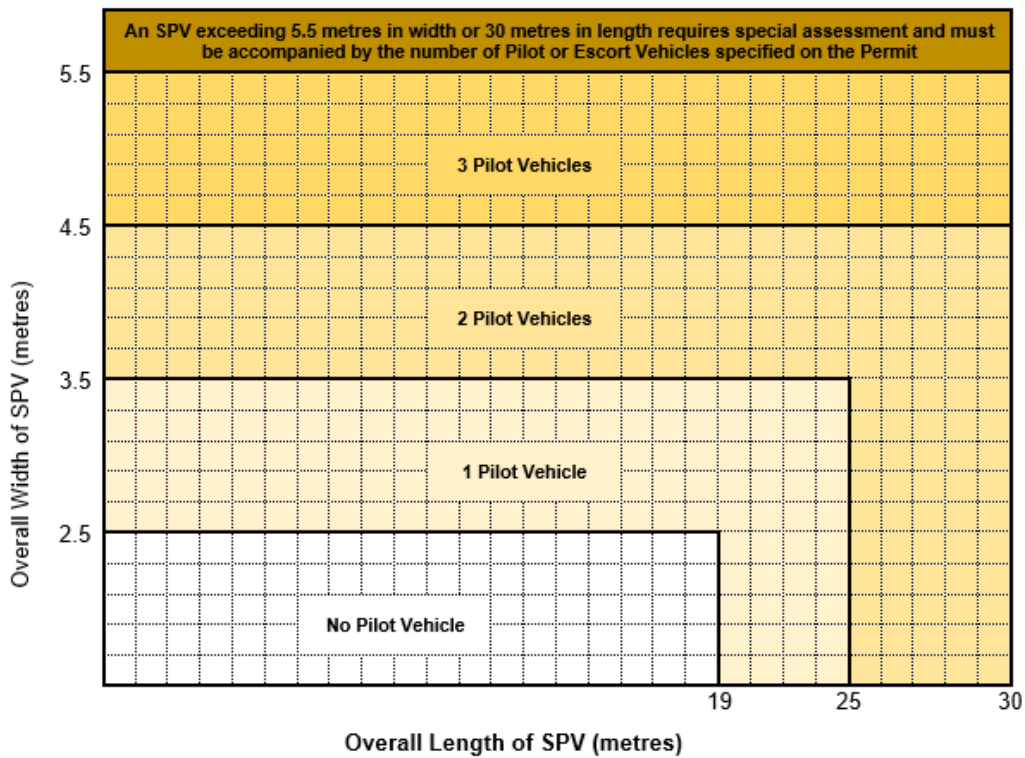


## Appendix 4: Minimum Pilot & Escort Requirements

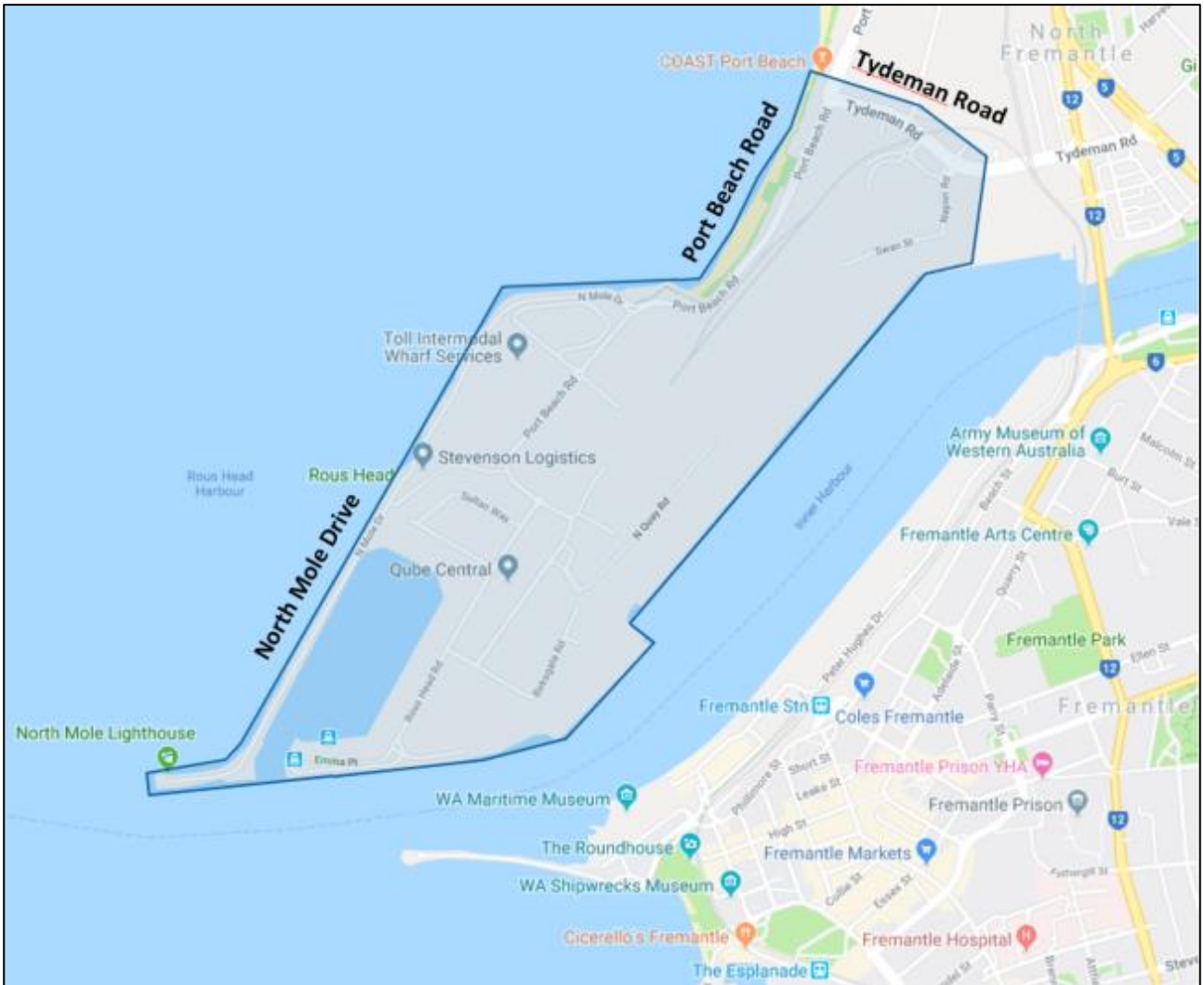
### Minimum Pilot & Escort Requirements (excluding Central Zones)



### Minimum Pilot & Escort Requirements within Central Zones



## Appendix 5: Fremantle Port Precinct



## Appendix 6: Henderson Industrial Estate

